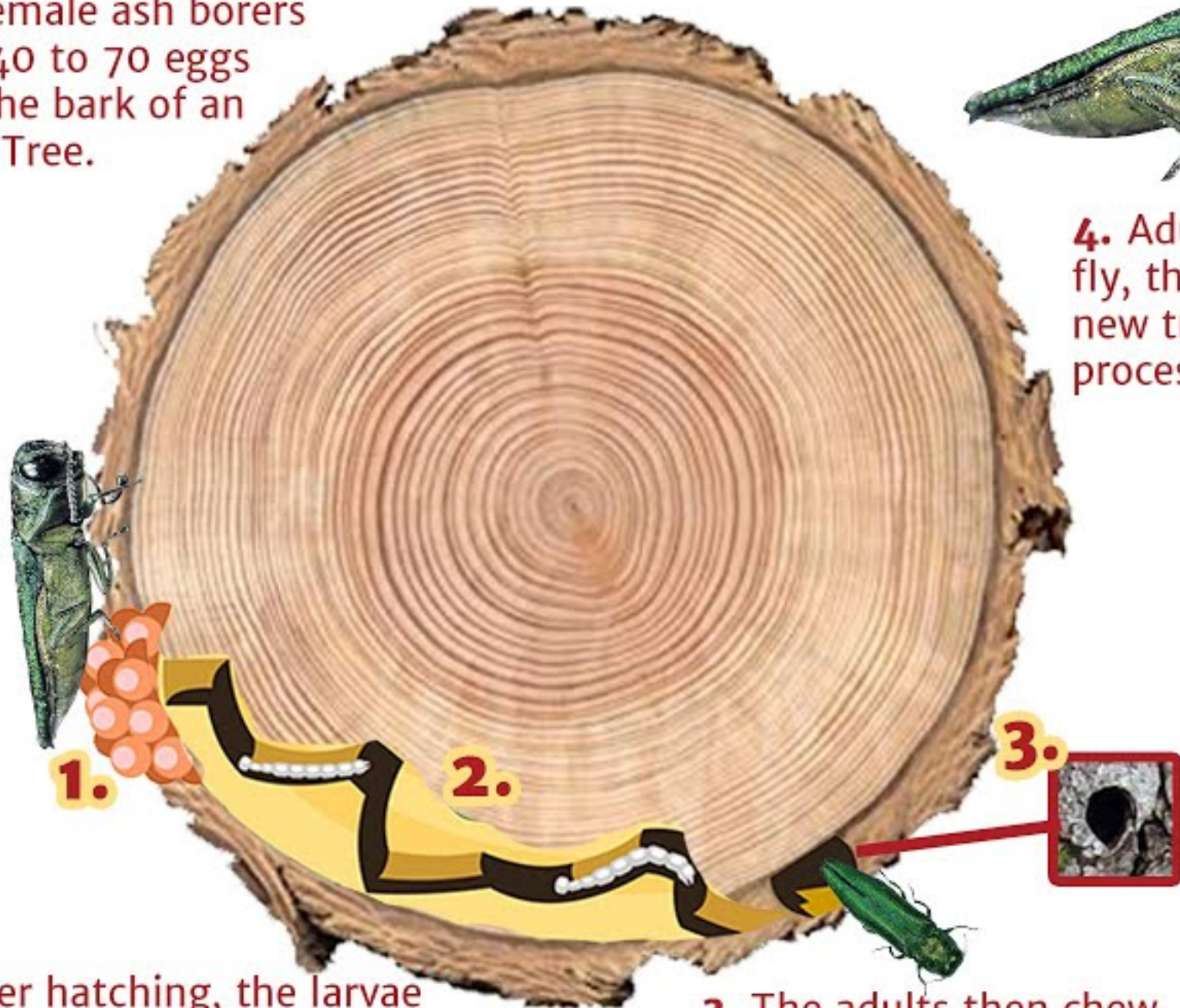


# Life Cycle of The Emerald Ash Borer

1. Female ash borers lay 40 to 70 eggs on the bark of an Ash Tree.



2. After hatching, the larvae bore into the tree layers just below the bark to feed. They remain there for 1 to 2 years, then pupate into adults.

3. The adults then chew a telltale D-shaped exit hole in the bark.



4. Adults, which can fly, then seek out new trees, and the process starts again.

